

25 Years  
UNESCO World  
Heritage Site



Zollverein

# Sales Guide

Zollverein  
UNESCO World Heritage Site

ZOLLVEREIN  
UNESCO WORLD HERITAGE SIT



# 100 per cent industrial heritage

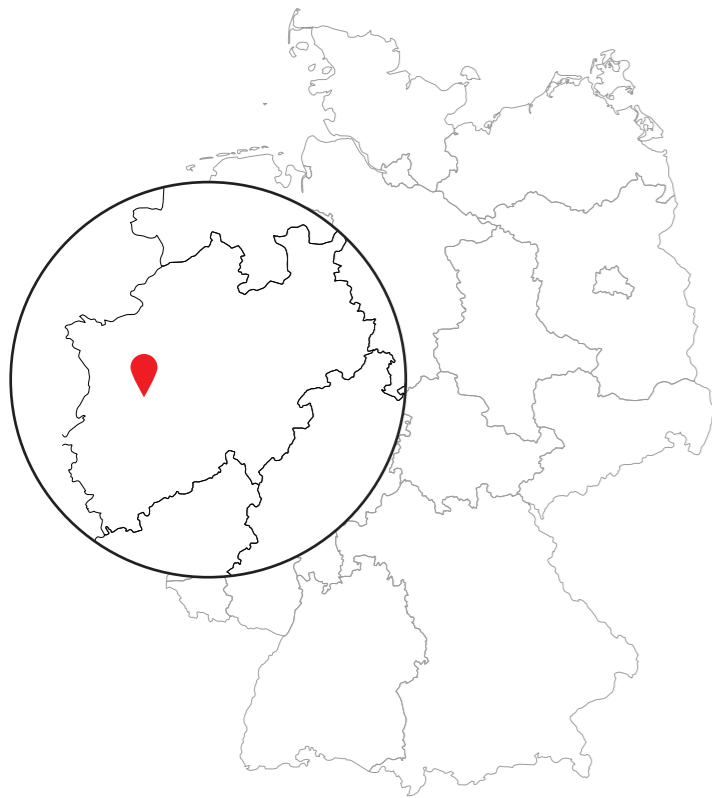
## Zollverein UNESCO World Heritage Site

Gigantic machinery in its original condition. Impressive, huge buildings with brick facades. The feeling that the wheels of the twin pithead frame could start turning again at any moment. A warm welcome to the Zollverein UNESCO World Heritage Site.

Once, this 100-hectare site was a "forbidden city"; only employees were allowed inside the walls of the Zollverein industrial complex. Unfortunately, that is no longer the case. Conveyor belts and mine carts, pipelines and rail tracks, enormous machines and heavy tools: at the Zollverein Coal Mine and Coking Plant, history comes alive – captivating around 1.7 million visitors from across the globe every year.

Zollverein has evolved from an industrial production site into an impressive hub for culture and leisure, education and business. Today, the UNESCO World Heritage Site offers unique experiences that leave a lasting impression on its guests.

For anyone wishing not only to understand industrial heritage and the structural transformation of an entire region but to experience it first-hand, Zollverein is an absolute must-visit.



### 100 per cent Ruhr Region

The Zollverein UNESCO World Heritage Site is located in the city of Essen, in the western Ruhr Region. Thanks to its strategically favourable location between the rivers Rhine and Ruhr, Zollverein can easily be integrated into existing travel itineraries. Its central position also makes the site an ideal component of both day trips and multi-day tours – whether as a main attraction or as a stop on a broader itinerary.

### 100 per cent welcome!

It is the new central meeting point at Zollverein: from June 2026, the Welterbe Forum will welcome visitors with a first warm reception. The forum is fully accessible, equipped with multimedia features and offers multilingual content. Touchscreens, a film presented on an oversized LED wall, and engaging exhibits connect past, present and future in an innovative way – giving visitors an immediate overview of the coal mine and coking plant.



# 100 per cent living history

## Guided Tours Zollverein

Did you know that coal is also referred to as "black gold"? Or that the coking plant operated continuously, 24 hours a day, seven days a week? Who were the people who descended underground each day to ensure that the coke ovens never went out? Passing original conveyor belts, mine carts and impressive steel structures, visitors stand exactly where industrial history was made.

### 100 per cent coal mine – our recommendation: On Coal and Miners

Ideal for individual visitors and tour groups experiencing the Zollverein UNESCO World Heritage Site for the first time. This guided tour offers both a concise and impressive overview of the history and architecture of the "most beautiful coal mine in the world". At authentic locations that have been preserved in their original state, participants gain insight into production processes and learn informative background details. The tour is available all year round, provides a tangible experience of industrial heritage and is also suitable for international visitors, as it is offered in several languages.

**Duration:** 1 h | Groups from €120  
**Languages:** DE | NL | EN | ES | FR | PL | IT  
**Special rate for tour operators:**  
10% discount on the group price



### 100 per cent coking plant – our recommendation: About Coal, Coke and Hard Work

Glowing coke and billowing clouds of steam: on this guided tour, visitors explore the production processes of what was once the largest central coking plant in Europe, accompanied by expert guides. Between chimneys and the 600-metre-long coke oven battery, you will discover the newly opened exhibition areas along the Monument Path. Using 3D animations and projections, this impressive industrial complex and its fascinating technological history are brought back to life. The tour is available all year round and offered in multiple languages.

**Duration:** 1 h | Groups from €160  
**Languages:** DE | NL | EN | FR | IT  
**Special rate for tour operators:**  
10% discount on the group price



**Please note:** As a former industrial complex, Zollverein was built for machines, not for people – therefore not all areas are fully accessible. We will be happy to advise you on accessible guided tour options.

## 100 per cent museum

Unthinkable during its years of operation, today the site is home to not just one, but two museums and visitors can explore the industrial heritage hotspots of the Ruhr Region all in one place.



### Ruhr Museum

A glowing orange stairwell and 6,000 exhibits set within a spectacular industrial backdrop: the Ruhr Museum at the Zollverein UNESCO World Heritage Site presents the fascinating natural and cultural history of the Ruhr Region, one of the largest industrial areas in the world.



**Opening hours:** Mon–Sun 10:00–18:00  
(closed on 24, 25 and 31 December)  
**Recommended duration of visit:** 2–3 hours  
**Adult admission price**  
(valid until 31 December 2027)  
**Permanent exhibition:** €10  
**Temporary exhibition:** €10  
**Gallery exhibition:** €5  
**Ruhr Museum completely:** 15 €  
**Free audio guide app for the permanent exhibition:** DE | EN | FR | ES | NL  
**Group tours (90 minutes):** from €80  
plus group admission price per person  
**Special rate for tour operators:**  
20% discount on admission and  
10% on guided tours of the museum  
**Offer for coach drivers or tour leaders:**  
one additional free place on the guided tour



**Location:** Coal Washery **Contact:** Central Visitor Services Zollverein/Ruhr Museum  
Phone +49 201 24861-444 | E-mail [besucherdienst@ruhrmuseum.de](mailto:besucherdienst@ruhrmuseum.de)



### Portal of Industrial Heritage

At Zollverein, visitors can explore the entire region and its industrial heritage highlights without travelling further afield. At the Portal of Industrial Heritage, 18 interactive stations and “speaking” exhibits Phonet the stories of former protagonists; in the Ruhr Region, these include former breweries, coking plants, workers’ settlements and a ship lift. The Portal of Industrial Heritage can be visited with a ticket for the Ruhr Museum’s permanent exhibition.



### Red Dot Design Museum

The Red Dot Design Museum is the world’s largest museum of contemporary product design.



**Opening hours:**  
Mon–Sun 11:00 - 18:00 | Closed on 1 January, from  
22 June to 7 July 2026, and on 24, 25 and 31 December  
**Recommended duration of visit:** 2 hours  
**Adult admission price (valid until 1 January 2028):** €10

**Location:** Boiler House  
**Contact:** Phone +49 201 301040 | E-mail [museum@red-dot.de](mailto:museum@red-dot.de)

## 100 per cent enjoyment Gastronomy

There is plenty to discover across the 100-hectare site – making a culinary break with regional specialities and hearty dishes all the more welcome.

### Bistro Schacht XII €€

It doesn’t get more central than this: Bistro Schacht XII offers a cosy café and restaurant serving regional home-style cooking, hearty classics, homemade cakes, as well as vegetarian and vegan options. The team is happy to accommodate group requests on an individual basis.

**Opening hours:** Mon–Sun 10:00–17:30  
**Seating:** 100 indoors | 170 outdoors  
Separate group room available on request.

**Location:** Hall 12  
**Contact:** Petra Garbe | Phone +49 163 6163180  
E-mail [info@bistro-schacht12.de](mailto:info@bistro-schacht12.de)



### Casino Zollverein €€-€€€

One of the most striking dining venues in North Rhine-Westphalia: set between 12-metre-high concrete pillars and compressors, CASINO combines modern Ruhr cuisine with a relaxed atmosphere and professional service.

**Opening hours:** Mon closed  
Tue–Sun 17:00–22:00 | Sun brunch from 10:30–14:30  
**Seating:** 150 indoors | 120 outdoors  
Separate group room available on request.

**Location:** Casino Zollverein  
**Contact:** Yanik Christian Herkenrath | Phone +49 201 8302422  
E-mail [restaurant@casino-zollverein.de](mailto:restaurant@casino-zollverein.de)



### Café Coal Washery €

Where 23,000 tonnes of coal were once sorted each day, Café Coal Washery now offers snacks, cakes, hot and cold drinks – inviting visitors to relax among preserved original machinery.

**Opening hours:** Mon–Sun 10:00–18:00  
Closed on 24, 25 and 31 December  
**Seating:** 60

**Location:** Coal Washery  
**Contact:** Lena Hölker | Phone +49 201 2470442  
E-mail [catering@imhoff-essen.de](mailto:catering@imhoff-essen.de)





**deinKult Kokerei Café & Restaurant €-€€**

A cosy café and restaurant offering regional home-style cooking, hearty classics, homemade cakes, as well as vegetarian and vegan options.

**Opening hours:** Mon-Thu 12:00-18:00  
 Fri 12:00-19:00 | Sat 11:00-21:00  
 Sun 11:00-19:00  
**Seating:** 120 indoors | 200 outdoors  
 Separate group room available on request.

**Location:** Mixing Plant  
**Contact:** Neslihan Duy | Phone +49 160 7754241  
 E-mail gastro@deinkult.de

**The Mine €-€€**

“The Mine” at Zollverein is a restaurant and event venue located in the former winding engine house. Mediterranean cuisine meets Ruhr classics in a unique industrial setting with views of the twin pithead frame and the escalator.

**Opening hours:** Mon closed | Tue-Thu 12:00-22:00 | Fri-Sat 12:00-23:00  
 Sun 10:00-21:00 **Seating:** 250 indoors | 120 outdoors.  
 Separate group room available on request.

**Location:** Werner-Müller-Square  
**Contact:** Yaşam Ilbay | Phone +49 162 3748759 | E-mail hallo@the-mine.eu



# 100 per cent favourite pieces

## Souvenirs and shops

From the latest illustrated books and art objects to fashion, jewellery and sustainable soaps: take a small piece of Zollverein home with you!



**Walther König Bookstore**

Visitors will find high-quality illustrated books and selected publications on art, photography, design and history. Current exhibition catalogues from the Ruhr Museum, along with a curated selection of souvenirs, complete the range.

**Opening hours:**  
 Mon-Fri 11:00-18:00 | Sat-Sun 10:00-18:00  
 Closed on 24, 25 and 31 December

**Location:** Coal Washery  
**Contact:** Phone +49 201 36599469  
 E-mail ruhrmuseum@buchhandlung-walther-koenig.de



**Atelier Thomas Mack**

In his workshop at Zollverein, Thomas Mack creates etchings, watercolours, calligraphy and photo frottages.

**Opening hours:** Sat and Sun 13:00-18:00 (and by appointment)

**Location:** Passage/Hall 12  
**Contact:** Phone +49 162 4329656  
 E-mail thomasmack@nexgo.de



**GOLEM Art and construction**

The showroom of GOLEM Art and construction presents a selection of outstanding Art Nouveau and Art Deco tiles.

**Opening hours:** Tue-Fri 10:00-18:00 | Sat 10:00-15:00

**Location:** Comb Building  
**Contact:** Phone +49 201 54548910  
 E-mail essen@golem-baukeramik.de



**Grubenhelden**

This young fashion label produces T-shirts, hoodies, shirts and accessories infused with Ruhr Region history: each item incorporates a piece of an original miner’s shirt once worn underground.

**Opening hours:** Thu-Fri 13:00-18:00 | Sat-Sun 12:00-18:00

**Location:** Passage/Hall 12  
**Contact:** E-mail kontakt@grubenhelden.de



**Margaretenhöhe Ceramic Workshop**

Internationally acclaimed artist Young-Jae Lee presents her masterworks here. The workshop brings together plates, bowls, jugs, planters and vases – all crafted by hand.

**Opening hours:** Mon-Fri 09:00-17:00  
(special opening times on request)

**Location:** Bullmannau 19  
**Contact:** Phone +49 201 305080  
E-mail kontakt@kwm1924.de

**MÖBELLOFT**

MÖBELLOFT showcases handcrafted furniture made of steel and wood by emerging designers from across Europe.

**Opening hours:** Mon closed | Tue-Fri 11:00-19:00  
Sat 11:00-17:00 | Sun 11:00-17:00 (show day only, no sales)  
Closed on public holidays.

**Location:** Comb Building  
**Contact:** Phone +49 201 54546980 | E-mail welcome@moebelloft.com



**Paul Walther**

Paul Walther's studio offers a range of photography sessions and revives an almost forgotten technique, combining contemporary photography with traditional craftsmanship.

**Opening hours:** Fri 11:00-18:00 | Sat 11:00-17:00  
Additional appointments by arrangement.

**Location:** Comb Building  
**Contact:** Phone +49 201 2766211 | E-mail mail@paul-walther.com



**Sapor Soap**

This traditional soap manufacturer invites visitors to explore and shop in its in-house "soap world" (saponeria).

**Opening hours:** Mon-Fri 10:00-16:00  
(closed on public holidays)

**Location:** Comb Building  
**Contact:** Phone +49 201 27989225  
E-mail info@sapor.de



**SchmuckProdukt**

SchmuckProdukt creates its own jewellery pieces as unique items and in small series.

**Opening hours:** Wed-Sat 12:00-18:00  
Closed on public holidays and from 21 to 31 December

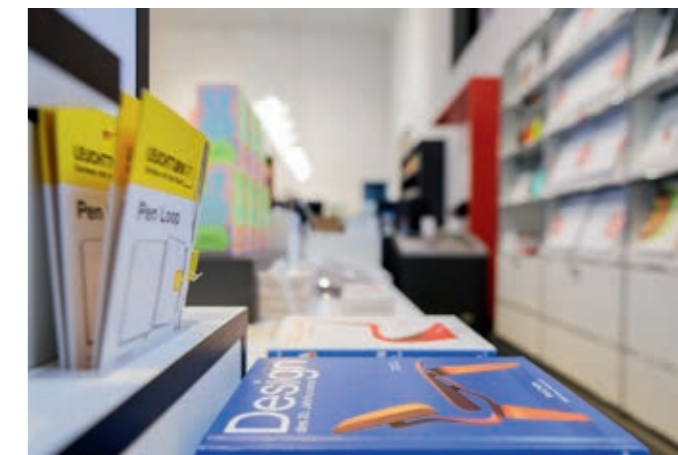
**Location:** Passage/Hall 12  
**Contact:** Phone +49 201 8305244  
E-mail info@schmuckprodukt.de

**Shop/Red Dot Design Museum**

Alongside a wide range of design products, gifts and lifestyle accessories, the shop also offers design publications such as the Red Dot Award yearbooks.

**Opening hours:**  
Tue-Sun and public holidays 11:00-18:00  
During NRW school holidays additionally  
Mon 11:00-18:00  
Closed on 24, 25 and 31 December,  
as well as 1 January.

**Location:** Red Dot Design Museum/Boiler House  
**Contact:** Phone +49 201 301040  
E-mail museum@red-dot.de



## 100 per cent comfort

Stylish accommodation

### #hotelfriends

The design hotel #hotelfriends at the Zollverein UNESCO World Heritage Site in Essen offers 65 individually designed rooms and suites, combining mining heritage with contemporary design. With its welcoming atmosphere, a 24/7 bar, lounge and conference facilities, it pays homage to the Ruhr Region, located directly on the former colliery site. The rooms are thematically inspired by mining, design and individual sponsorship concepts.



- Group rates available from 5 rooms
- Parking for cars and coaches
- Conference facilities
- Gastronomy (seating: 100 indoors | 200 outdoors)

**Location:** #hotelfriends, Martin-Kremmer-Straße 1  
**Contact:** Timur Talaga | Angela Handlhofer  
 Phone +49 201 747043600 | +49 201 747043601  
 E-mail gruppenreservierung@hoPhonefriends.de

## 100 per cent on site

Arrival, parking, infrastructure

Whether by coach, car or public transport, the Zollverein UNESCO World Heritage Site is easy to reach.

### Overview:

- Coaches: designated drop-off bays at the coal mine site allow convenient boarding and alighting. In addition, ample free parking is available at Car Park C. The car park is within short walking distance of both the coal mine and the coking plant.
- Cars: free parking is clearly signposted on site. Accessible parking spaces are available at Car Parks A1 and A2.
- Public transport: various bus and tram/train lines connect the World Heritage Site to the public transport network.

Sanitary facilities are distributed across the entire site and can be reached from all areas within a maximum of 10 minutes on foot. Please note that the Zollverein World Heritage Site is not fully accessible.



## 100 per cent Essen

Around the Zollverein UNESCO World Heritage Site

If the Zollverein Coal Mine and Coking Plant have inspired you to explore more of the city of Essen, further attractions worth seeing – ranging from industrial heritage to culture and nature – can be discovered within a short travel time either on half-day or full-day excursions.

### A selection:

- Museum Folkwang: world-class art is presented in both permanent and temporary exhibitions, right in the heart of the Ruhr Region. (Distance: 9 km)
- Villa Hügel: in the south of Essen, visitors encounter a place of history, grandeur and impressive architecture. (Distance: 15 km)
- Lake Baldeney: the River Ruhr, which gave the region its name, flows through the south of Essen and into Lake Baldeney, which offers nature, water and expanse for outdoor enthusiasts. (Distance: 20 km)



Zollverein is also the ideal starting point for those wishing to explore even more industrial heritage sites.

### Highlights:

- Deutsches Bergbau-Museum Bochum: here, visitors can learn more about the history of underground and surface mining. (Distance: 17 km)
- Gasometer Oberhausen: an XXL-scale industrial backdrop providing a spectacular setting for exceptional exhibitions. (Distance: 20 km)
- Landschaftspark Duisburg-Nord: the disused ironworks has been transformed into a vibrant, publicly accessible park. (Distance: 25 km)



# 100 per cent your World Heritage Site

Personal advice and contact

## Contact:

Phone +49 201 24681-230

E-mail [monika.dombrowsky@zollverein.de](mailto:monika.dombrowsky@zollverein.de)

Phone +49 201 24681-325

E-mail [jana.vanwesel@zollverein.de](mailto:jana.vanwesel@zollverein.de)

Are you looking for striking visual impressions of the World Heritage Site? You can request your preferred images free of charge via the Zollverein image database: [zollverein-bilddatenbank.de](http://zollverein-bilddatenbank.de)

## Imprint:

Zollverein Foundation

Zollverein UNESCO World Heritage Site

Bullmannaue 11, 45327 Essen

Phone +49 201 246810

[info@zollverein.de](mailto:info@zollverein.de)

[zollverein.de](http://zollverein.de)

Image credits: Hauke Dressler/Bergbaumuseum Bochum, Brigida Gonzalez, Hanna Lohmann, Sven Lorenz, Thomas Mayer, Red Dot Design Museum, Südstudio, Jochen Tack, Frank Vinken, Paul Walther, Thomas Willemsen

As of April 2026. Changes are not intended, but remain reserved.



Sponsors and supporters of the Zollverein Foundation

Ministerium für Heimat, Kommunales,  
Bau und Digitalisierung  
des Landes Nordrhein-Westfalen



Project sponsors



Bundesministerium  
für Wohnen, Stadtentwicklung  
und Bauwesen



STÄDTEBAU-  
FÖRDERUNG  
von Bund, Ländern und  
Gemeinden

Ministerium für Heimat, Kommunales,  
Bau und Digitalisierung  
des Landes Nordrhein-Westfalen



Ministerium für  
Kultur und Wissenschaft  
des Landes Nordrhein-Westfalen



Cooperation partners

