

ZOLLVEREIN UNESCO WORLD HERITAGE SITE



The cultural heart of the
Ruhr Area

1 coal mine / 1 coking plant / 1,000 possibilities



In 1986, a chapter in the history of Zollverein came to an end: the last miners descended down the shaft for a final shift. Simultaneously, however, the guideline of "Art and Design" was gradually filled with life in the once "Forbidden City". Creative people and those working in various fields of culture rediscovered the old halls and buildings for themselves and their activities. "Preservation through conversion" was the principle - not just for the coal mine but also for the coking plant, which had to discontinue operations in 1993. This was a far too formal wording for the beginning of a powerful process, the end of which would be the "Zollverein Cultural Landscape". In 2001, the central shaft Zollverein XII, the Shafts 1/2/8 as well as the Zollverein Coking Plant were listed as a UNESCO World Heritage Site. Nine years later, the Zollverein World Heritage Site was the landmark of the European Capital of Culture RUHR.2010 - and a symbol for the change of a whole region to become the Ruhr Metropolis. A region that does not deny its past, but carries its history into the future. After all, there was more than enough space available at Zollverein: for museums, dance, music, theatre, culinary art, and light. For more than 1.5 million people who let themselves in for the Zollverein adventure every year. Chapter by chapter.





UNESCO WORLD HERITAGE SITE – THE HERITAGE OF MANKIND

Zollverein UNESCO World Heritage Site: 100 hectares, distributed over the central shaft facilities of Zollverein XII, the Shafts 1/2/8 and the coking plant premises. 100 hectares which fill the term “industrial culture” with life like no other place. More than 25 years after its closure, the once largest colliery in Europe combines culture and dining, design and architecture, handicraft and the creative industry – as the only World Heritage Site of the Ruhr Area.

December 14, 2001: The UNESCO World Heritage Committee declares the inscription of the Zollverein Coal Mine Industrial Complex in Essen on the World Heritage List. The overriding objective: the preservation of cultural and natural heritage sites of mankind, which have an outstanding universal value and are thus both unique and authentic, but are simultaneously sensibly integrated into public life. The conditions at Zollverein were perfect:

The Committee acknowledged the ensemble as “representative of the development of traditional heavy industries in Europe” and especially praised the “architecture of the industrial complex in the Bauhaus style, which was for decades exemplary for modern industrial construction”.

Authentic and part of public life: meanwhile, about 1.5 million visitors get inspired by the Zollverein World Heritage Site. Year after year. Preservation through conversion has been the motto to the present day; variety characterises the offerings, which combine history, culture, creativity, entertainment, gastronomy, and recreation. Be inspired – by cultural highlights and guided tours, by renowned museums, exceptional studios and exquisite cuisine, by an exceptional symphony in red and steel.

Welcome to the Zollverein UNESCO World Heritage Site.

CHRONICLE OF THE ZOLLVEREIN WORLD HERITAGE SITE



Beginning

- 1847** Franz Haniel has the first shaft sunk.
- 1851** The first coal is extracted. Zollverein is the first underground coal mine of the region.

Extension

- 1900** 5,355 miners work in three shaft sites altogether. Zollverein is one of the largest collieries in the Ruhr Area.
- 1926** Zollverein becomes a coal mine of Vereinigte Stahlwerke AG, the second largest steel group worldwide. Vereinigte Stahlwerke AG decides to construct a central shaft at Zollverein.



Rationalisation

- 1932** Mining operations at Zollverein Shaft XII commence on 1 February, the then largest coal mining facility in the world. The architects are Fritz Schupp and Martin Kremmer. Among experts Shaft XII is considered a technical masterpiece: with a daily output of 12,000 net tons of pure hard coal, the facility produces the three-to fourfold quantity of an average colliery in the Ruhr Area. For three decades, the architecture of the coal mine is exemplary for industrial buildings in the Ruhr Area.
- 1961** With spatial and functional connection to Shaft XII, the Zollverein Coking Plant is put into operation. After another expansion in the 1970s, it ranks among the largest and most modern coking plants in Europe.

Structural change

- 1986** On 23 December, the Zollverein Shaft Sites are closed down; the previous week, Shaft XII is put under a preservation order.
- 1990** The refurbishment and conversion measures for turning Zollverein Shaft XII into an international centre for culture are commenced.
- 1993** On 30 June, the Zollverein Coking Plant is decommissioned, too.
- 1996** Casino Zollverein is opened in the former compressor hall.
- 1997** Design Zentrum Nordrhein Westfalen moves into the boiler house, which has been converted by Lord Norman Foster. Today, it accommodates the red dot design museum.
- 1998** Refurbishment works at the Zollverein Coking Plant are commenced. Zollverein Foundation (Stiftung Zollverein) is established. Since 2008, it pools all activities at the World Heritage Site.
- 2001** The Zollverein Shaft Sites XII and 1/2/8 as well as the Zollverein Coking Plant are declared a UNESCO World Heritage Site. The development of the premises on the basis of the master and management plan by Rem Koolhaas starts that same year.
- 2003** The extensive refurbishment of the coal washery begins. The architects responsible are Rem Koolhaas' Office for Metropolitan Architecture from Rotterdam as well as Böll and Krabel from Essen.
- 2006** The SANAA Building is a spectacular new addition. Companies from the creative industry establish themselves at "designstadt No1" at Shaft 1/2/8.
- 2010** The Ruhr Area is European Capital of Culture, Zollverein is right in the middle of it as an international centre for culture and the creative industry. Ruhr Museum, the RUHR.VISITORCENTER Essen, the Portal of Industrial Heritage, and the new Denkmal-pfad ZOLLVEREIN® (Monument Path ZOLLVEREIN®) are opened.
- Zollverein UNESCO World Heritage Site is considered a magnet for visitors to the Ruhr Metropolis – from here, a whole region becomes accessible. As the centre of the "Route of Industrial Heritage" it fascinates more than 1.5 million visitors from Germany and abroad every year.



AUDIO GUIDE RUHR MUSEUM

Nature, Culture and History of the Ruhr Area.

The audio guide makes it possible for the visitor to experience the permanent exhibition in an individual way. It offers additional information on the exhibition at 88 stations.

Dates: daily 10.00 a.m. to 6.00 p.m. / **fee:** 3 Euros plus admission / Available in English, Spanish, French, Dutch and German / **duration:** 1.5 hours

Info and registration:

phone +49 201 246 81-444 / besucherdienst@ruhrmuseum.de
For other available guided tours in English please contact us.

THE FORMER COAL WASHERY

Being 90 metres long, 30 metres wide and 40 metres high, the former coal washery is the largest building of the Zollverein Coal Mine. When in operation it was a large-scale machine serving the sorting, classification, intermediate storage, and distribution of hard coal. Its architectural shape is completely subordinated to this function.

Since the conversion by Rem Koolhaas' Office for Metropolitan Architecture as well as by the architects Heinrich Böll and Hans Krabel, the building has accommodated the visitor center, the Ruhr Museum, the Portal of Industrial Heritage, and Denkmalpfad ZOLLVEREIN® (Monument Path ZOLLVEREIN®).



RUHR MUSEUM

The Ruhr Museum is situated in the former coal washery of the Zollverein Coal Mine, Shaft XII. It considers itself as the memory and display window of the Ruhr Metropolis. With more than 6,000 exhibits, its permanent exhibition features the fascinating natural and cultural history of the Ruhr Area. The present, the pre-industrial memory and the region's dramatic history in the industrial era are illustrated on three levels.

In addition to the permanent exhibition, the Ruhr Museum regularly features special exhibitions, which may also focus on subjects not related to the Ruhr Area.

PORTAL OF INDUSTRIAL HERITAGE

Multimedia-based presentations and innovative information terminals show the anchor points of the Route of Industrial Heritage with their former and current use. A combination of images, texts and sounds impressively imparts the monuments of the industrial age as they were in the past, as they are today and will be in the future.



A footbridge links the Portal of Industrial Heritage with the authentically preserved part of Zollverein Shaft XII: A path along huge machines and conveyor belts leads along the Denkmalpfad ZOLLVEREIN® (Monument Path ZOLLVEREIN®) up to the viewing platform on the rooftop of the coal washery, which offers a spectacular panoramic view across the region.

Opening hours:

daily 10.00 a.m. to 6.00 p.m. / closed on 24., 25. & 31.12.

Admission: permanent exhibition Ruhr Museum & Portal of Industrial Heritage 8 Euros, reduced 5 Euros, groups 6 Euros / special exhibition Ruhr Museum 7 Euros, reduced 4 Euros, groups 5 Euros / gallery exhibition Ruhr Museum 3 Euros, reduced 2 Euros, groups 2 Euros / children & teenagers up to 17 years of age: admission free / further information on reduced admission fees, group tickets or annual tickets: www.ruhrmuseum.de/en

GUIDED TOURS

DENKMALPFAD ZOLLVEREIN® (Monument Path ZOLLVEREIN®)

In the facilities, halls and rooms of the historic core areas of the Zollverein Coal Mine and Coking Plant time seems to have stopped. These areas, which have been authentically preserved to the present day, form the Denkmalpfad ZOLLVEREIN® / Coal Mine and Coking Plant, along which the "path of the coal" runs like a golden thread. From the extraction of coal to the coking process, at Zollverein the first part of the heavy-industrial production chain can still be completely reconstructed and experienced in the context of guided tours. Sturdy shoes and seasonal clothing are recommended when participating in a tour. Registration is imperative. No guided tours on 24., 25. & 31.12.

Participation fee: 9,50 Euros, reduced 6 Euros, children and teenagers [aged 5 to 17] 6 Euros / family ticket I [two adults and own children] 22 Euros / family ticket II [one adult and own children] 14 Euros

Info and registration: phone +49 201 2 4 6 8 10 / denkmalpfad@zollverein.de
For other available guided tours as well as current information please see www.denkmalpfad-zollverein.de



ABOUT COAL AND MINERS

The path of coal in the coal mine

Starting in the shaft hall where the coal once arrived, you follow its journey through the screening plant and further to preparation and loading. In the outdoor areas you get to know interesting facts about the architecture, nature and Zollverein's multi-faceted process of change from a colliery into a modern cultural centre.

Dates: April to October Mon to Fri 11.00 a.m., 2.00 p.m. and 4.00 p.m., Sat, Sun, holidays and bridging days every hour from 11.00 a.m. to 5.00 p.m. / November to March Mon to Fri 11.00 a.m., 2.00 p.m., Sat, Sun, holidays and bridging days every hour from 11.00 a.m. to 4.00 p.m. / all-season Sat, Sun, holidays and bridging days at 3.00 p.m. in English / duration: 2 hours

THROUGH COKE OVEN AND BENCH GALLERY

The path of coal in the coking plant

Through the mixing plant and past conveyor bridges this tour leads along the second part of the coal's path right up to the top of the gigantic coke oven battery. From coke production on the "black side" to the extraction of by-products on the "white side" of the coking plant, you gain authentic insights into the impressive technology and history of the coking plant during this guided tour.

Dates: April to October Mon to Fri 11.30 a.m. and 2.30 p.m., Sat, Sun, holidays and bridging days 11.30 a.m., 12.30 p.m., 2.30 p.m., 3.30 p.m. and 4.30 p.m. / November to March Mon to Fri 2.30 p.m., Sat, Sun, holidays and bridging days 11.30 a.m. and 2.30 p.m. / duration: 2 hours

FAMILY SHIFT

Guided tour for children from the age of 5 and their families

The miners are on holiday and now it's time for the families to continue mining operations. At the end all that remains is the key question: Which family produced the largest amount of "black gold"?



Dates: April to October Sat 1.00 p.m., Sun and holidays 11.00 a.m. and 1.00 p.m. / July and August additionally Mon and Wed 1.00 p.m. / Easter holidays (NRW) and Autumn break (NRW) additionally Mon 1.00 p.m., November to March Sun 11.00 a.m. / duration: 2 hours

THE COKING PLANT FOR YOUNG AND OLD

Guided family tour for children from the age of 5 and their families

Exciting games, tricky tasks and mysteries invite the whole family to explore the Zollverein Coking Plant and to learn how coal is turned into coke.

Dates: April to October Sun and holidays 2.00 p.m. / Easter holidays (NRW), July, August and Autumn break (NRW) additionally Fri 2.00 p.m. / November to March Sun 2.00 p.m. / duration: 2 hours



THE ZOLLVEREIN WORLD HERITAGE SITE AS A CULTURAL CENTRE

After its closure, the once largest hard coal mine in Europe has developed into a lively and internationally recognised location for art, culture and the creative industry. Every year, more than one million guests from every part of the world visit numerous events at the Zollverein UNESCO World Heritage Site, among them established formats such as ExtraSchicht, C3-Festival, contemporary art ruhr and many more.

ZOLLVEREIN® Concerts

Top-class concert series with stars from classical music, jazz, pop, and contemporary music. With guest performances of world-famous musicians such as pianist Alfred Brendel or jazz legend Jan Garbarek the industrial monument was able to establish itself in the region as an outstanding event location. Phone +49 201 2 4 6 8 10 / www.zollverein.de

Advance ticket sales for ZOLLVEREIN® Concerts: www.adticket.de, at all authorized ADticket agencies or at the RUHR.VISITORCENTER Essen at the Coal Washery [A14]



PACT Zollverein B45

Performing Arts Choreographisches Zentrum NRW Tanzlandschaft Ruhr In the former miners' washrooms at Shaft 1/2/8, PACT Zollverein provides a forum for ground-breaking developments in dance, performance, theatre, media, and visual arts.

Phone +49 201 289 47 00 / www.pact-zollverein.de

Advance ticket sales for regular events at PACT Zollverein: TicketCenter of "Theater und Philharmonie Essen" / phone + 49 201 812 22 00 / tickets@theater-essen.de

red dot design museum A7

Featuring more than 2,000 exhibits, the red dot design museum accommodates the world's largest exhibition of contemporary design. Tue to Sun and holidays 11.00 a.m. to 6.00 p.m. (last admission: 5.00 p.m.), closed on 24., 25., 31.12. & 1.1.

Admission: 6 Euros, reduced 4 Euros / special exhibitions 9 Euros, reduced 4 Euros / children under the age of 12 admission free / family ticket 16 Euros / family ticket special exhibitions 22 Euros / Fri Pay-What-You-Want / phone +49 201 30 10 40 / museum@red-dot.de / www.red-dot.de/museum

The Palace Of Projects C88

Total installation by artist couple Ilya and Emilia Kabakov

In the otherwise dark salt warehouse the snail shell-shaped installation shines like a lantern at night: 16 rooms accommodating 65 projects by fictional persons wait to be discovered and explored.

Fri to Sun and on holidays 11.00 a.m. to 5.00 p.m. / for current information please see www.zollverein.de



SANAA Building A35

The bright, unusual cube is the first project the Japanese architectural practice SANAA has implemented in Europe. Since January 2010, the SANAA Building has been used by Folkwang University of the Arts as well as for public events.

Phone +49 201 18 50 34 00 / www.folkwang-uni.de / www.folkwang-agentur.de / karten@folkwang-uni.de

LA PRIMAVERA A13

Light and Space / art installation by Maria Nordman

Can only be accessed one by one, allows no views of the interior from the outside. Visitors enter an empty white room, where sunlight only penetrates through a narrow slit. May to September Fri to Sun and on holidays 11.00 a.m. to 6.00 p.m.

Sculpture forest on the Zollverein spoil tip

Granite sculptures by sculptor Ulrich Rückriem

In the industrial forest between Shaft XII and the Coking Plant five granite sculptures by sculptor Ulrich Rückriem line the footpaths. The artist uses these artworks to establish relations to their surroundings, whilst simultaneously setting a mark for the spoil tip.

Art shaft Zollverein B43 Thomas Rother

Painter, writer and collector Thomas Rother works with the legacy of the mining history: paints made from rust, installations composed of old tools, stories of days gone by. His workshop in the former machine hall at Shaft 1/2/8 is both living space and exhibition hall.

Workshop Atelier Thomas Mack A12

Since 2001, artist Thomas Mack has been working in his printing workshop at the Zollverein World Heritage Site. With graver and printing press he creates etchings, watercolours, calligraphies and photo frottages. Sat, Sun 1.00 p.m. to 6.00 p.m. and by arrangement / phone +49 162 432 96 56 / thomasmack@nexgo.de / www.handgedruckt.de

Margaretenhöhe Ceramic Workshop B52 Young-Jae Lee

Internationally renowned and award-winning artist Young-Jae Lee presents her masterpieces at the Margaretenhöhe Ceramic Workshop – handmade plates, platters, bowls, jugs, planters and vases. Mon to Fri 9.00 a.m. to 5.00 p.m., Sat 11.00 a.m. to 3.00 p.m. / phone +49 201 30 50 80 / kontakt@kwm1924.de / www.kwm1924.de



ARKA Culture Workshop A12

A group of visual artists offering a comprehensive range of courses and workshops on creative techniques. Interested parties can find inspiration in the exhibitions at the culture workshop. Thur, Sat, Sun 2.00 p.m. to 4.00 p.m., Fri 11.00 a.m. to 1.00 p.m. / during holidays (NRW) by arrangement / admission free / phone +49 201 30 61 40 / arka.essen@vodafone.de / www.arka-kulturwerkstatt.de

SchmuckProdukt A12

Workshop and Gallery

SchmuckProdukt is the workshop and gallery of jewellery respectively product designers Julia Stotz and Annette Wackermann. In addition to their own creations, the gallery also presents products by guest designers. Wed to Sat 12.00 a.m. to 6.00 p.m. / phone +49 201 830 52 44 / info@schmuckprodukt.de / www.schmuckprodukt.de

RESTAURANTS

Phänomania Experience Field

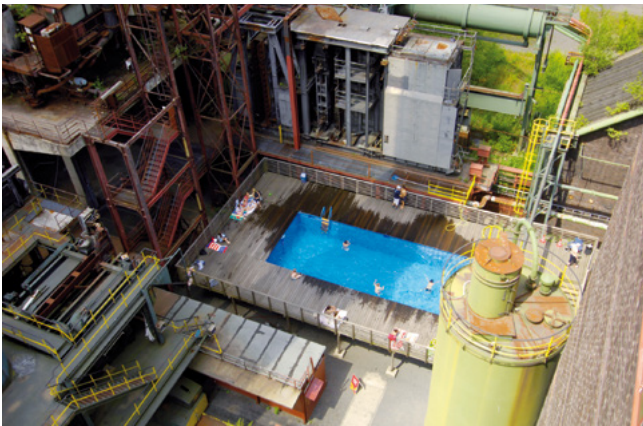
The Experience Field for the development of senses has been conceived by Hugo Kükelhaus. At more than 80 experimentation stations set up indoors as well as outdoors visitors can playfully engage and generate and study phenomena all by themselves.

Mon to Fri 9.00 a.m. to 6.00 p.m., Sat, Sun 10.00 a.m. to 6.00 p.m. / adults 7 Euros, students 6 Euros, pupils 5 Euros, children (aged 3 to 5) 3 Euros / for further information please visit the website / phone +49 201 30 10 30 / info@erfahrungsfeld.de / www.erfahrungsfeld.de/essen

Works Swimming Pool **C75** seasonal / summer

The bathing season was first opened at the coking plant in 2001 in the context of the "Contemporary Art and Critique" art project – with the "works swimming pool" by Frankfurt-based artists Dirk Paschke and Daniel Milohnic. Meanwhile, the artwork has become a highlight for excursions in the Ruhr Area during the summer holidays (NRW).

During summer holidays (NRW) daily 12.00 p.m. to 8.00 p.m. / closed in bad weather / admission free



ZOLLVEREIN® Ice Rink **C74** seasonal / winter

In winter, the ZOLLVEREIN® Ice Rink with a length of 150 metres stretches along the coking ovens, in which coal was once turned into coke at 1,000 degrees Celsius. Ice skating artists and those who want to become one can pirouette, dash across the ice or carefully take first steps on the slippery surface. For further information please visit the website www.zollverein.de/eisbahn.

Casino Zollverein - Restaurant & Events **A9**

New world cuisine by experienced routiniers and young guns. Terrace with 100 seats. Roofed beer garden with 200 seats serving small dishes & snacks. According to the magazine "Der Feinschmecker", it is the "most spectacular restaurant location of the Ruhr Area". Tue to Thur 11.30 a.m. to 2.30 p.m. and 5.30 p.m. to 12 a.m. [kitchen open until 10.00 p.m.], Fri to Sun 11.30 p.m. to 12.00 a.m. [kitchen open until 10.00 p.m., Sun 11.30 a.m. to 2.30 p.m. buffet lunch] / closed on Mondays / May to September garden terrace Tue to Sun 11.00 a.m. to 8.00 p.m. / phone +49 201 83 02 40 / info@casino-zollverein.de / www.casino-zollverein.de

Café Kohlenwäsche **A14**

Cakes, snacks and coffee specialities in the middle of restored original machines. Those who only need a small refreshment will find the right offer in the former laboratory of the coal washery. Daily 10.00 a.m. to 6.00 p.m. / phone +49 201 868 77 02 / catering@imhoff-essen.de / www.imhoff-essen.de



"Butterzeit!" Bistro and Event Location **A12**

From buttered bread as a snack to "Aunty Matta's allotment salad": "Butterzeit!" serves breakfast and brunch as well as fresh dishes from the stockpot.

April to September daily 10.00 a.m. to 6.00 p.m. / October to March Tue to Fri 11.00 a.m. to 5.00 p.m., Sat, Sun 10.00 a.m. to 6.00 p.m. / closed on Mondays / open on holidays / phone +49 201 43 64 35 01 / info@butterzeit.com / www.butterzeit.com

café & restaurant „die kokerei“ **C70**

The menu offers a fresh, uncomplicated cuisine: salads, stews, pasta, and seasonal main courses.

Tue to Sun 12.00 a.m. to 8.00 p.m. and by arrangement / closed on Mondays / during holidays (NRW) also Mon 12.00 p.m. to 8.00 p.m. / phone +49 201 830 12 98 / info@die-kokerei.de / www.die-kokerei.de

Café Zollverein [Schacht 3/7/10]

In the ambience of the old hoisting machine hall the visitors enjoy coffee and cakes, fresh bread rolls and pretzel sticks.

Location: Phänomania Experience Field / Mon to Fri 9.00 a.m. to 6.00 p.m., Sat, Sun and holidays 10.00 a.m. to 6.00 p.m., closed on 24., 25., 26., 31.12. & 1.1. / phone +49 201 30 10 30 / info@erfahrungsfeld.de / www.erfahrungsfeld.de

© [COKING PLANT]

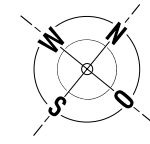
- C70** Coking Plant Info Point
Monument Path ZOLLVEREIN.
die kokerei – café und restaurant
[Mixing Plant]
- C74** ZOLLVEREIN. Ice Rink
seasonal
- C75** Works Swimming Pool
Daniel Milohnic und Dirk Paschke
seasonal
- C83** Grand Hall ZOLLVEREIN.
[Extraction and Compressor Hall]
- C88** The Palace of Projects
Ilya and Emilia Kabakov
[Salt Store]
- C90** Shops and studios
[Comb Building]

© [COKING PLANT]

COKING PLANT
PEDESTRIAN ENTRANCE

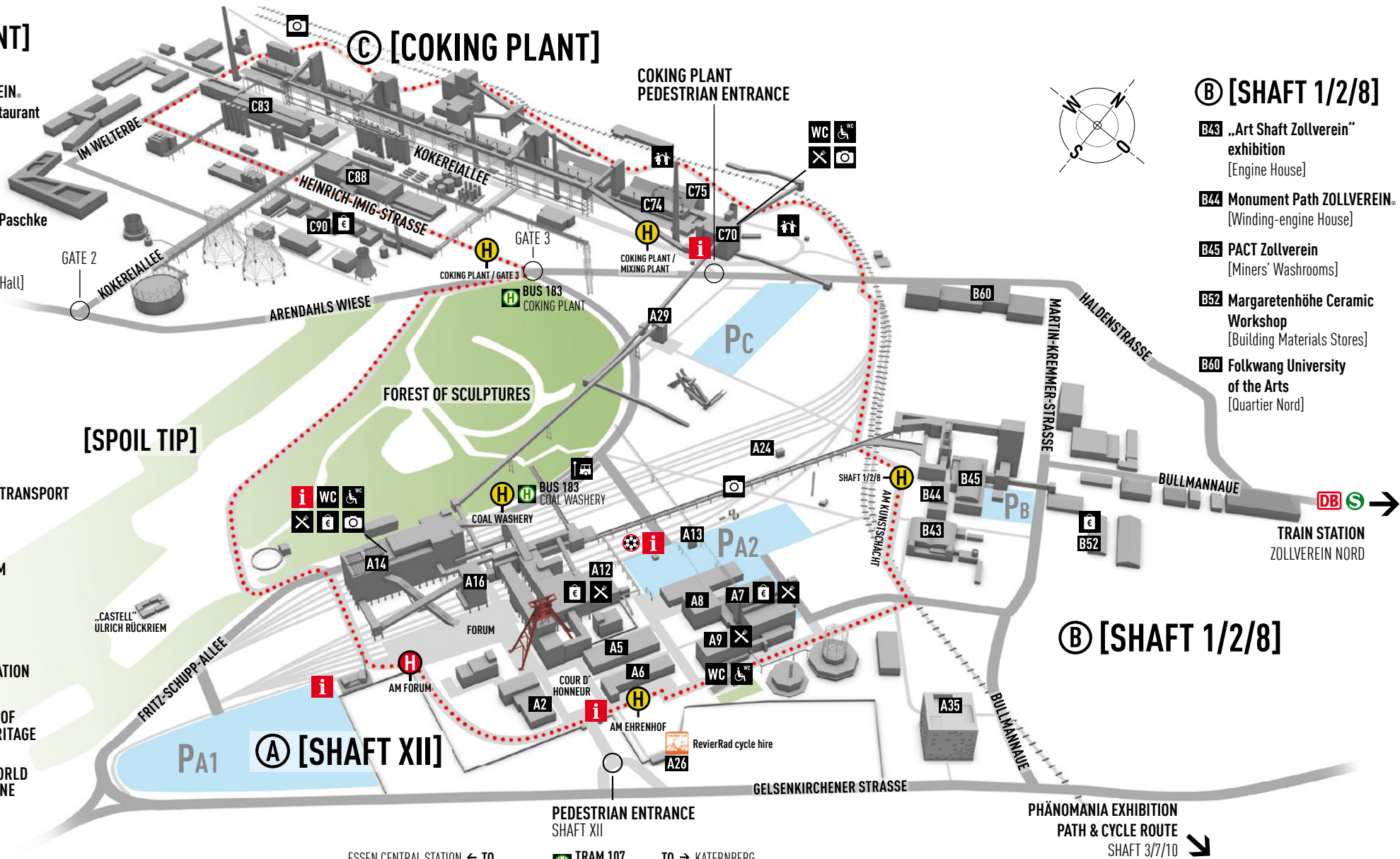
Ⓑ [SHAFT 1/2/8]

- B43** „Art Shaft Zollverein“
exhibition
[Engine House]
- B44** Monument Path ZOLLVEREIN.
[Winding-engine House]
- B45** PACT Zollverein
[Miners' Washrooms]
- B52** Margaretenhöhe Ceramic
Workshop
[Building Materials Stores]
- B60** Folkwang University
of the Arts
[Quartier Nord]



- Ⓛ** BUS STOP
- Ⓜ** BUS STOP LOCAL PUBLIC TRANSPORT
- i** INFO POINT
- WC** PUBLIC RESTROOM
- ♿** BARRIER-FREE RESTROOM
- ✂** RESTAURANTS
- 🎮** PLAY AREA
- 🛍** SHOP
- 📷** VIEWPOINT / PHOTO LOCATION
- ⋯** CIRCULAR WALK
- Ⓜ** ROUND TRIPS AND STOP OF THE UNESCO WORLD HERITAGE ZOLLVEREIN LINE
- Ⓜ** STOP OF THE UNESCO WORLD HERITAGE ZOLLVEREIN LINE

[SPOIL TIP]



Ⓐ [SHAFT XII]

- A2** Hall 2 [Transformer and Distribution Station]
- A5** Hall 5 [Central Workshop]

- A6** Hall 6 [Electrical Workshop]
- A7** Red Dot Design Museum
[Boiler House]

- A8** Hall 8 [High-Pressure Compressor House]
- A9** Restaurant CASINO Zollverein
plus summer garden
Hall 9 [Low-Pressure Compressor House]

- A12** Shops and studios
Hall 12 [Picking Belt Hall]
- A13** LA PRIMAVERA
Maria Nordman
[Boiler Ash Bunker]

- A14** RUHR.VISITORCENTER Essen
Ruhr Museum
Monument Path ZOLLVEREIN.
Portal of Industrial Heritage
Café Kohlenwäsche // Walther König Bookshop
Erich-Brost-Pavilion
[Coal Washery]

- A16** [Coking Coal Bunker]
- A24** Zollverein dye-plant Garden
[Signal Box]
- A26** Cycle hire point
[Distribution Station 2]

- A29** [Weighing Tower]
- A35** Folkwang University
of the Arts
[SANAA Building]

ESSEN CENTRAL STATION ← TO

TRAM 107
ZOLLVEREIN

TO → KATERNBERG
GELSENKIRCHEN CENTRAL STATION



OBTAINING INFORMATION IN ADVANCE

HOTLINE: +49 201 2 4 6 8 10

info@zollverein.de / www.zollverein.de

Mon to Sat 8.00 a.m. to 6.00 p.m., Sun 10.00 a.m. to 6.00 p.m.

Denkmalpfad ZOLLVEREIN® Visitor Service Phone +49 201 2 4 6 8 10

Information on guided tours of Denkmalpfad ZOLLVEREIN®
denkmalpfad@zollverein.de / www.zollverein.de

Mon to Sat 8.00 a.m. to 6.00 p.m., Sun 10.00 a.m. to 6.00 p.m.

Ruhr Museum Visitor Service Phone +49 201 246 81-444

Information on guided tours of the Ruhr Museum and its branches
besucherdienst@ruhrmuseum.de / www.ruhrmuseum.de

Mon to Fri 9.00 a.m. to 4.00 p.m.

OBTAINING INFORMATION ON SITE

RUHR.VISITORCENTER Essen / Besucherzentrum Ruhr A14

Information on the Zollverein UNESCO World Heritage Site and the
tourism programme of the entire Ruhr Metropolis.

Daily 10.00 a.m. to 6.00 p.m. / closed on 24., 25. & 31.12. /

phone +49 201 2 4 6 8 10 / ruhr.visitorcenter@zollverein.de

Info Point Coking Plant C70

Information and starting point of guided tours of the Denkmalpfad
ZOLLVEREIN® / Coking Plant. Mon to Fri 11.00 a.m. to 3.00 p.m.,

Sat, Sun and on public holidays 11.00 a.m. to 5.00 p.m.

BOOKS & SOUVENIRS

Shop in the red dot design museum A7

Specialist books and selected design accessories.

Tue to Sun and holidays 11.00 a.m. to 6.00 p.m. / phone +49 201 30 10 40 /

museum@red-dot.de / www.red-dot.de/museum

Walther König Bookstore A14

Souvenirs and books on Zollverein and the Route of Industrial Heritage
as well as on design and architecture.

Daily 10.00 a.m. to 6.00 p.m. / phone +49 201 36 59 94 69 /

ruhrmuseum@buchhandlung-walther-koenig.de /

www.buchhandlung-walther-koenig.de

EXPLORING THE SITE



RevierRad Bike Rental Station A26

Bicycle rental as well as bicycle service

Daily 10.00 a.m. to 6.00 p.m. / price per bicycle from 9 Euros per day /

phone +49 208 848 57 20 / www.revierrad.de

Ring Promenade (circular walk)

The Ring Promenade, a 3.5-kilometre stretch of footpaths, connects
the different locations of the World Heritage Site to provide an at-
tractive local recreational area – by foot, by bike or on roller blades.

OBTAINING INFORMATION IN THE CITY AND THE REGION

Tourism Office of EMG - Essen Marketing GmbH

Mon to Fri 9.00 a.m. to 5.00 p.m. / Sat 10.00 a.m. to 1.00 p.m.

Phone +49 201 887 23 33 / touristikzentrale@essen.de /

www.essen-tourismus.de

Ruhr Tourismus GmbH

Information leaflets on the Ruhr Area: phone +49 1806 18 16 20*

Accommodation and travel offers: phone +49 1806 18 16 10*

Tickets for events: phone +49 1806 18 16 50*

www.ruhr-tourismus.de/en

*0.20 Euros/min. German landline, max. 0.60 Euros/min. mobile telephony

Bürger- und Verkehrsverein im Stadtbezirk VI - Zollverein

Mon to Fri 10.00 a.m. to 5.00 p.m. / phone +49 201 860 59 40 /

info@bvz-zollverein.de / www.bvz-zollverein.de



UNESCO-Welterbe Zollverein
 Gelsenkirchener Straße 181
 45309 Essen
 info@zollverein.de
 www.zollverein.de



Imprint

Publisher: Zollverein Foundation (Stiftung Zollverein)



Editorial team:

Schacht 11; Christina Kemnitz, Silke Ladnar, Corinne Valentin

Design: Christoph Balan, www.dieverwandlung.jetzt

Translation: murphy translation office, Hamburg

Updated version of the edition of 2012

Reprint: July 2018, Circulation: 15,000 copies

Changes are not intended but remain reserved.

Photo rights: Archiv A. Kollek N. Schallenberg / cultural service /
 Matthias Duschner / Thomas Mayer / Ruhr Museum, Brigida Gonzáles /
 Frank Vinken / Thomas Willemsen

Cover picture: Full moon tour along Denkmalpfad ZOLLVEREIN®

© Frank Vinken / Zollverein Foundation (Stiftung Zollverein)

SPONSORS



EUROPÄISCHE UNION
 Investition in unsere Zukunft
 Europäischer Fonds
 für regionale Entwicklung



Der Beauftragte der Bundesregierung
 für Kultur und Medien



Bundesministerium
 für Städtebau und
 Wohnungsbau



INVESTITIONSPROGRAMM
 NATIONALE UNESCO WELTERBESTÄTTEN



Gedulde mit Macht
 Alle Städtebauverfahren durch
 Ministerium für Kultur, Jugend,
 Sport und Medien des Landes
 Nordrhein-Westfalen

Ministerium für Klimaschutz, Umwelt,
 Landwirtschaft, Natur- und Verbraucherschutz
 des Landes Nordrhein-Westfalen

Ministerium für Familie, Kinder,
 Jugend, Kultur und Sport
 des Landes Nordrhein-Westfalen



Regionalverband Ruhr



Netzwerk
 Ruhrgebiet
 LVR
 Qualität für Menschen



EMESCHER
 GENOSSENSCHAFT



PwC-Stiftung
 Jugend · Bildung · Kultur

COOPERATION PARTNERS



route*industriekultur*



Kulturpartner
 Stiftung Zollverein



Industriekultur
 Zoller Zoller in Essen
 Volume 1 of 2011